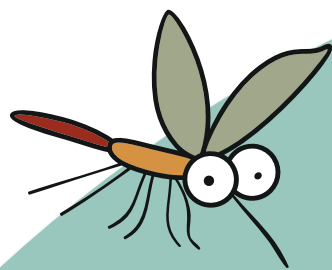


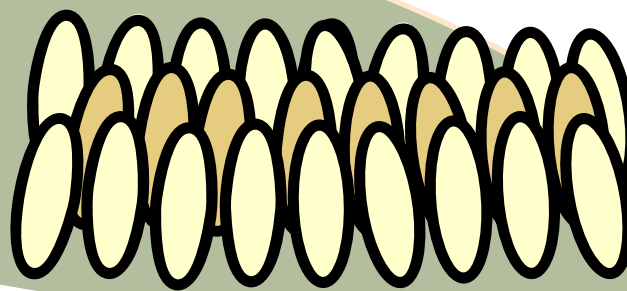
MOSQUITO LIFE CYCLE



4 ADULT STAGE

"IMAGO"

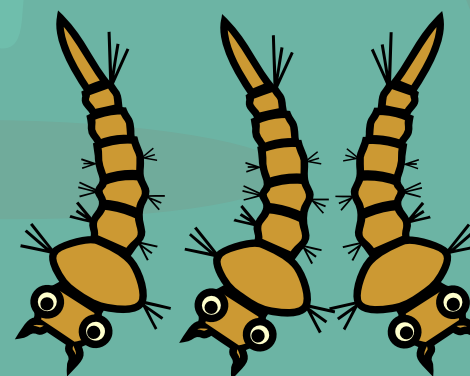
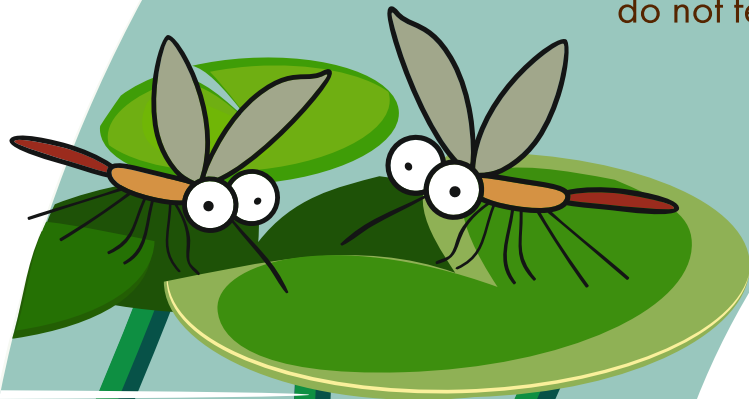
- Average adult lives 2 to 3 weeks, overwintering adults live 6 to 8 months
- Many stay very close to their breeding site
- Only females search for blood meals, used for egg development
- Males live only long enough to breed and do not feed on blood



Females can lay as many as 200 eggs with each blood meal and has many blood meals in her lifetime

1 EGG STAGE

- Most eggs hatch into larvae within 48 hours during the peak of summer
- Eggs laid in the fall may hatch overwinter



2 LARVAL STAGE

"WIGGLERS"

- Must have water to complete development, stagnant water is ideal
- 4 developmental stages "larval instars"
- Feed on microorganisms and organic debris in water



3 PUPAL STAGE

"TUMBLERS"

- Stage only lasts a few days
- Pupae do not feed
- Air tube for breathing that penetrates the surface of the water

